



Submittal

Solar HVAC 230V | Model "Z" 2 - 3 Ton FV4C Residential Air Handling Unit

Part Number

AHUPZ- 2436 L 5 67 8 910 11 - F*

Unit Type	BTU's	Fan	Voltage (5)	Electric Heat (6,7)	Heat Stages (8)
P - Heat Pump	24 - 24,000 BTU's or 36 - 36,000 BTU's	L - Low/Std. Static	G - 230 VAC 1Φ H - 230VAC 3Φ	00 - No Heat *05 - 5 kW *10 - 10 kW	A - No Controls *B - 1 Stage *M - Modulating

Disconnect (9,10)

00 - No Disconnect
01 - 240V - 30A Fuse
11 - 240V - 30A Switch

Configuration (11)

0 - Air Handling Unit Only
*A - Vertical Supply / Vertical Return
*D - Horizontal Supply / Horizontal Return

Options (12)

0 - No Options
*B - Whole Unit (UG)
*C - All Coils (UG)
D - Evaporator Coil (UG)
F - FV4C AHU
*K - DW w/ Poly Insulation
*N - Dirty Filter Switch
Y - Start Up
*3 - Condensate Flow Switch
7 - Phase Monitor
*8 - Ionization Installed in AHU

* - Only available when F - FV4C AHU selected in Options (12)

Description

A Solar HVAC Residential Unit is more than twice as efficient as a standard residential split unit.

This Air Handler matches up with iAIRE's Solar HVAC Condensing Unit/Heat Pump with a solar box equipped with chambers lined with specialty reflective film is mounted to the top of the condensing unit. Through a patented process, ambient light is converted to thermal energy which reduces the energy demand on the compressor.

The highest efficiency condensing unit (made with the patented solar HVAC system) is paired with an FV4C air handling unit that comes equipped with a standard 1" pleated filter.

Units come with a 1-year parts warranty and 10 year compressor warranty.





Specifications and Dimensions

AHUPZ-2436-FV4 | Solar HVAC Model "Z" Residential FV4C AHU Dimensions

Evap Coil Specs.	Face Area	Metering Device	Filter In. (mm)	Motor Type	Motor HP	CFM
AHUPZ2436	3.46 sq. ft.	TXV	19-7/8" (505 mm)	ECM	1/2	600
						1000

Nominal Cooling Capacity	Shipping Weight
36,000	150 lbs / 68 kg

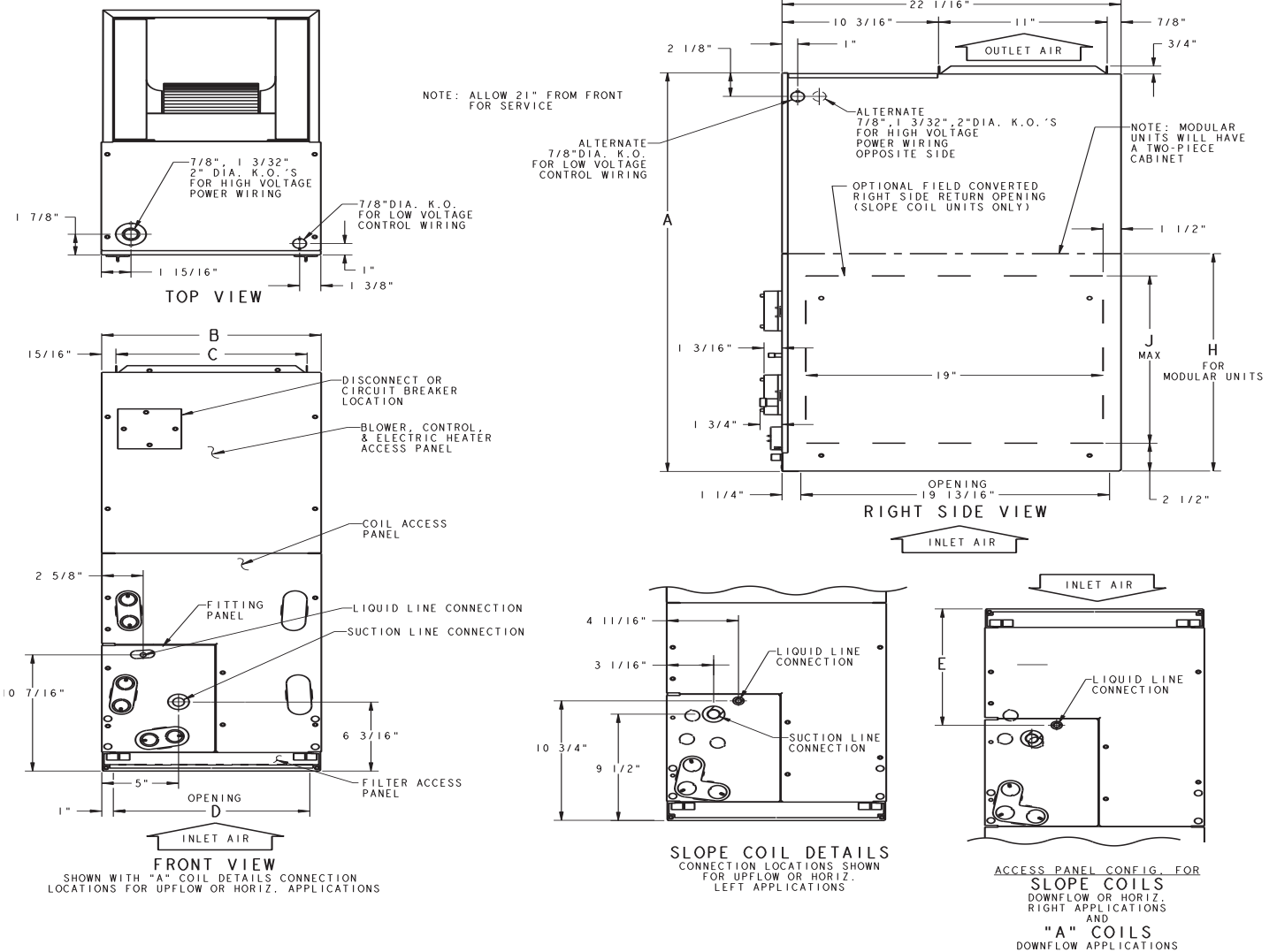
Estimated Sound Power Level (dBA)

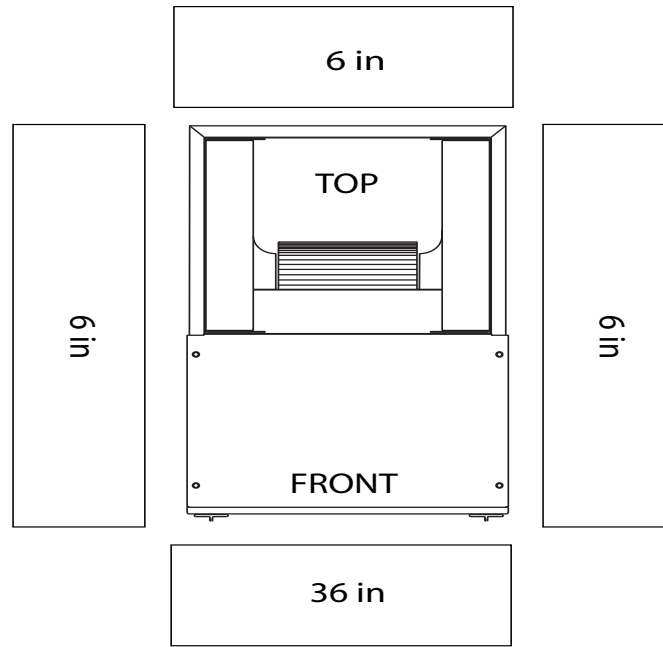
Conditions		Octave Band Center Frequency						
CFM	Ext. Static Pressure	63	125	250	500	1000	2000	4000
600	0.25	64	60	56	53	51	49	45
1000		67	63	59	56	54	52	48

Electrical Data for Units Without Electrical Heat

Motor HP	MTR FLA	Volts/Ph/Hz	Single Circuit		Min. Wire Size (AWG)
			MCA	Max. Overcurrent	
1/2	4.3	208/230/1/60	5.4	15	14 AWG

UNIT #	A	B	C	D	E	H	J
FV4036	53-7/16	21-1/8	19-1/4	19-1/8	19-3/16	28-5/16	19





OPTIONAL ELECTRIC HEAT CLEARANCES

